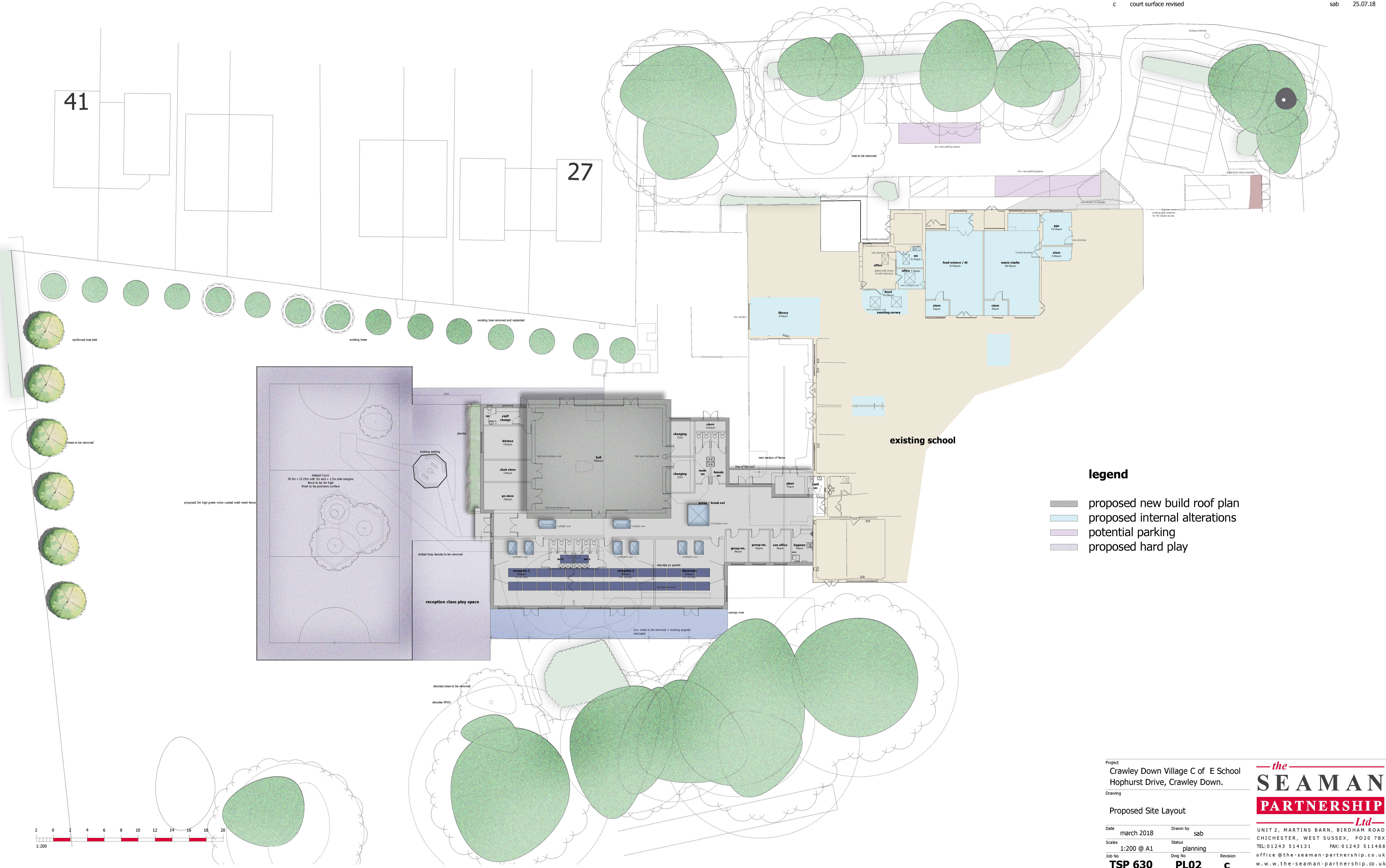


DO NOT SCALE FROM THIS DRAWING EXCEPT FOR PLANNING PURPOSES ONLY.
ALL DIMENSIONS RELATING TO SUB-CONTRACTOR OR SUPPLIERS WORK MUST BE CHECKED ON SITE AND AGREED BETWEEN THE GENERAL CONTRACTOR & THE SUB-CONTRACTORS / SUPPLIERS. ALL DIMENSIONS ARE IN MILLIMETERS. IF IN DOUBT ASK.
ALL WORKS OR MATERIALS INDICATED ON THE DRAWING ARE TO BE TO THE LATEST BRITISH STANDARDS AND ARE TO BE CARRIED OUT IN ACCORDANCE WITH THE RELEVANT CODES OF PRACTICE OR RECOGNIZED TRADE ASSOCIATIONS RECOMMENDATIONS & PUBLICATIONS

REV.	AMENDMENT	BY	DATE
a	netball court revised	sab	18.06.18
b	hard play area revised	sab	24.07.18
c	court surface revised	sab	25.07.18



legend

- proposed new build roof plan
- proposed internal alterations
- potential parking
- proposed hard play

Project
Crawley Down Village C of E School
Hophurst Drive, Crawley Down.



Drawing
Proposed Site Layout

Date: march 2018
Status: 1:200 @ A1
Job No: TSP 630
Dwg No: PL02
Revision: c

Drawn by: sab
Status: planning
Revision: c
UNIT 2, MARTINS BARN, BIRDHAM ROAD
CHICHESTER, WEST SUSSEX, PO20 7BX
TEL: 01243 514131 FAX: 01243 511488
office@the-seaman-partnership.co.uk
www.the-seaman-partnership.co.uk